

SEE MAP

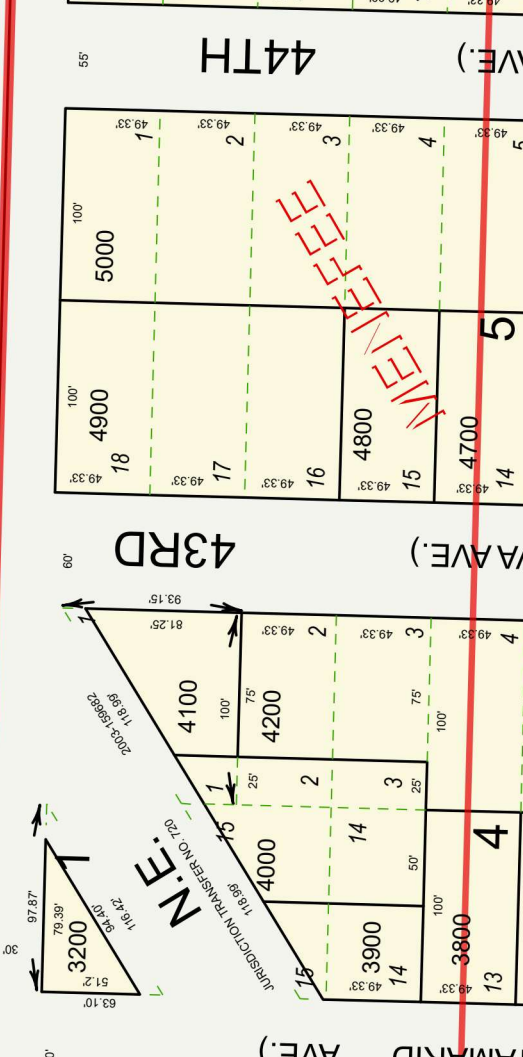
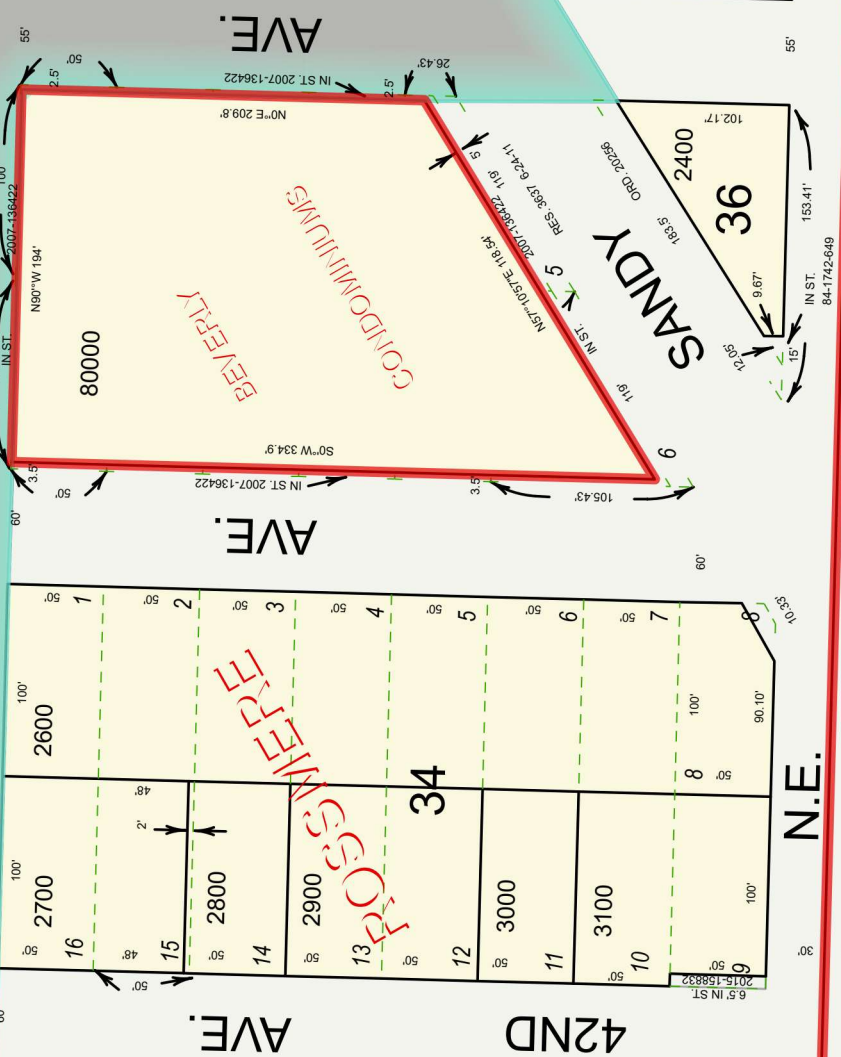
TILLAMOOK ST.

N.E. 42ND AVE.

N.E. 43RD AVE.

N.E. 44TH AVE.

HANCOCK BLVD.



APPROX. 1/16 COR.

S.W. COR. D.L.C. 47

INITIAL POINT

PLAT BK. 561 PG. 95

RES. 3569 5-24-11

E.L VINCENT BUSINESS ADD.

QUINN D.L.C. 50

N 1E 25DD

WATERFEED

HOEGEMIER

BEVERLY

CONDOMINIUMS

N.E.

N.E.

HANCOCK

44TH

43RD

(TAMARID AVE.)

(SERVA AVE.)

(Y AVE.)