

1N2E30CC
PORTLAND



S.W. 1/4 S.W. 1/4 SECTION 30
TOWNSHIP 1 N. RANGE 2 E.
WILLAMETTE MERIDIAN

1" = 100'

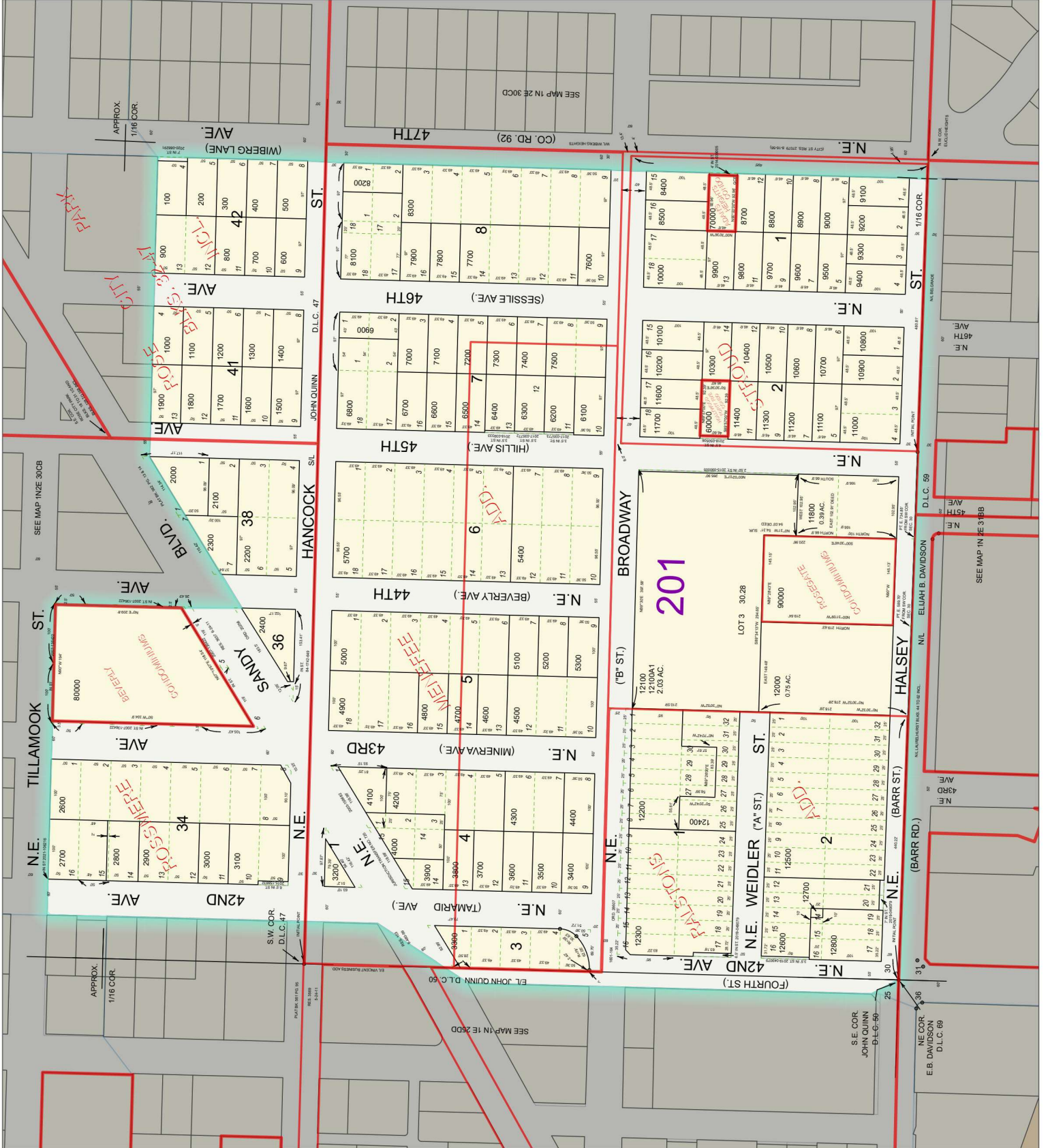
Cancelled Numbers:

- 2500
- 5500
- 5600
- 5800
- 5900
- 6000
- 8000
- 8600
- 11300
- 11900



PCS: NAD 1983 HARN State Plane Oregon
FPS: 3600 Feet Intl
Datum: North American 1983 HARN
Projection: Lambert Conformal Conic
Multnomah County
11/9/2021 1:32 PM

THIS MAP WAS PREPARED FOR ASSESSMENT PURPOSES ONLY
1N2E30CC PORTLAND



APPROX. 1/16 COR.

WIBERG LANE

AVE

AVE

AVE

AVE

AVE

AVE

ST.

ST.

ST.

ST.

ST.

ST.

ST.

ST.

ST.

ST.

ST.

ST.

ST.

ST.

ST.

ST.

ST.

ST.

ST.

ST.

ST.

ST.

ST.

ST.

ST.

ST.

ST.

ST.

ST.

ST.

ST.

ST.

ST.

ST.

ST.

ST.

ST.

ST.

ST.

ST.

ST.

ST.

ST.

ST.

ST.

ST.

ST.

ST.

ST.

ST.

ST.

ST.

ST.

ST.

ST.

ST.

ST.

ST.

ST.

ST.

ST.

ST.

ST.

ST.

ST.

ST.

ST.

ST.

ST.

ST.

ST.

ST.

ST.

ST.

ST.

ST.

ST.

ST.

ST.

ST.

ST.

ST.

ST.

ST.

ST.

ST.

ST.

ST.

ST.

ST.

ST.

ST.

ST.

ST.

ST.

ST.

ST.

ST.

ST.

ST.

ST.

ST.

ST.

ST.

ST.

ST.

ST.

ST.

ST.

ST.

ST.

ST.

ST.

ST.

ST.

ST.

ST.

ST.

ST.

ST.

ST.

ST.

ST.

ST.

ST.

ST.

ST.

ST.